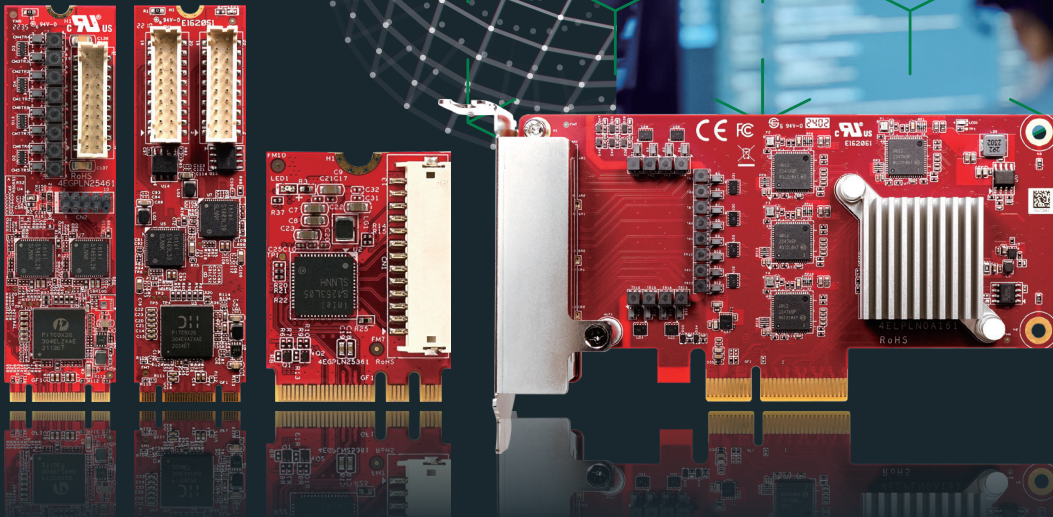


innodisk

CONNECTING
INTELLIGENCE



POWER UP YOUR NETWORK

RELIABLE AND VERSATILE LAN SERIES

Innodisk's M.2 and mPCIe LAN cards, featuring Intel Ethernet chips, deliver high-performance connectivity at 10/100/1000 Mbps, 2.5, and 10Gbps. Their isolation design and wide-temperature support ensure enhanced security and reliability. The daughterboard-less models provide seamless RJ-45 connections and support customized cable standards, allowing for versatile integration. Their compact size, extreme reliability, and flexible design make Innodisk's LAN modules robust networking solutions for industrial and commercial applications.



Flexible Cable
Design



Compact
Size



Extreme
Reliability



Diverse Selection
Options

FEATURED SOLUTION: THE SMALLEST 10GBE M.2 LAN MODULE

Innodisk's EGPL-T102 shrinks 10GbE networking into an M.2 module and delivers speeds 10x faster than Gigabit Ethernet while maintaining low power and seamless integration with your existing network.



10x Speed
performance



Excellent
compatibility



Low power
consumption



Easy and flexible
integration

INNODISK LAN SERIES FEATURE MATRIX

Series	No-daughter Board	Compact	Quad Port	Rugged
Form Factor	mPCIe M.2 2280 B-M	M.2 2242 B-M M.2 2230 A-E	Low-Profile PCIe M.2 2280 B-M	mPCIe M.2 2280 B-M PCIe
Speed	1 , 2.5GbE	1 , 2.5GbE	1GbE	1 , 2.5GbE
Port	2 , 4	1 , 2	4	1 , 2
Isolation	1kV	2kV	2kV	2kV
Daughter Board	x	v	M.2 Only	M.2 / mPCIe Only

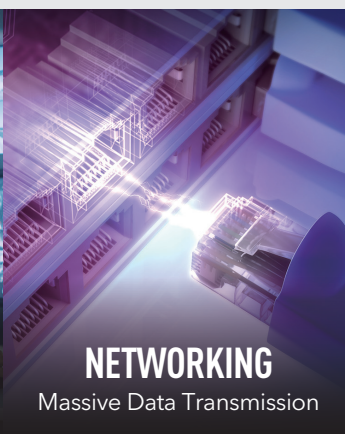
PRACTICAL APPLICATIONS



INDUSTRIAL
Machine Vision



SURVEILLANCE
High-Resolution Streaming



NETWORKING
Massive Data Transmission



GAMING
Low Latency Applications